

# WOMEN@WORK 2024

Redefining the Workforce of Tomorrow

## Agenda

### Powering the future through leadership, legacy and innovation



11 a.m. ET

One of the earliest advocates for the Women@Work summit, ADP President and CEO Maria Black will discuss the empowerment of women leaders, generative artificial intelligence (AI), innovation, navigating change and more. She'll be joined by a longtime supporter of the summit and its recurring emcee, Njeri Nginyo, vice president, assistant general counsel, and chairwoman of Women in Leadership, ADP. Don't miss this unique opportunity to learn from two fearless champions of inclusion, diversity, equity and belonging (IDEB) and personal and professional well-being.

#### Featuring:



**Maria Black**

President and CEO, ADP



**Njeri Nginyo**

Vice President,  
Assistant General Counsel, ADP

# WOMEN@WORK 2024

Redefining the Workforce of Tomorrow

## Stress less, laugh more with comedian Zarna Garg



11:20 a.m. ET

Do you need a good laugh? Do you need a bit more humor in your workday? If you answered "yes," this fun-filled session is for you! Join award-winning comic Zarna Garg as she delivers a hilarious and lighthearted performance to a live studio audience at ADP. Are you cackling yet?

### Featuring:



**Zarna Garg**

Award-Winning Comedian

# WOMEN@WORK 2024

Redefining the Workforce of Tomorrow

## Gen Z in focus: A multigenerational chat with today's workers



**11:50 a.m. ET**

**1 HRCI, 1 SHRM, 1 CPE\***

Generation Z has rapidly grown its workforce footprint in just four short years, accounting for more than a third of all hires and 16.8 percent of the total workforce.<sup>1</sup> Join us for a riveting conversation about working with Gen Z, featuring Gen Z and members of multiple generations. You'll learn about:

- How Gen Z prefers to work and views work
- The workplace preferences and perspectives of multiple generations
- The similarities and differences between the generations
- How to support all generations amid changing and diverse expectations
- Inclusive workplace and technology practices

### Featuring:



**Giselle Mota**

Chief of Product  
Inclusion, ADP



**Jazmyn Mijuskovic**

Senior Strategist,  
Experience, exaqueo



**Sterling Cruz-Herr**

Founder, TransClue

# WOMEN@WORK 2024

Redefining the Workforce of Tomorrow

## Increasing women's workplace influence with data and generative AI



**12:45 p.m. ET**

1 HRCI, 1 SHRM, 1 CPE\*

Don't miss this conversation on how data and generative AI can affect women's work experiences and career trajectories. You'll learn:

- How data can help you identify HR and business opportunities that support inclusion
- How to use data and generative AI to build influence and advocate for flexibility
- How data and generative AI are impacting skills development and the job market
- Tips for using data and generative AI to advance one's career and address bias

### Featuring:



**Aileen Smith**

Principal Technical  
Program Manager,  
Amazon Web Services



**Esosa Ighodaro**

Cofounder, Black  
Women Talk Tech



**Kasara Weinrich**

Principal Consultant,  
Future of Work, ADP



**Margaret Regan**

President and CEO, The  
FutureWork Institute

# WOMEN@WORK 2024

Redefining the Workforce of Tomorrow

## Mental wellness meetup: Strategies for overcoming common struggles at work



**1:45 p.m. ET**

1 HRCI, 1 SHRM, 1 CPE\*

Join an emotional health coach for a powerful session prioritizing women's challenges at work. All are encouraged to attend, learn from each other and discuss coping strategies. Participants will open their minds and hearts, sharing their experiences with pay inequity, impostor syndrome, discrimination and more. This session will address:

- Prejudicial or biased behavior
- Feeling lonely at the top, erased or like there's zero support
- A lack of leaders and coworkers who look like oneself
- Caring for oneself and loved ones
- Navigating struggle and advocating for change that benefits all

### Featuring:



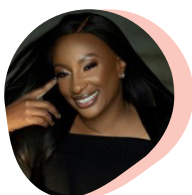
**Amy Freshman**

Senior Director,  
Global HR, ADP



**Ann Shoket**

CEO and Owner,  
The Li.st



**Michele  
Ellis-Williams**

Founder and CEO,  
Michele Lee Ellis  
Consulting



**Rah Kalon**

Emotional Intelligence  
Consultant, Emotional  
Health Coach, LifeCare

# WOMEN@WORK 2024

Redefining the Workforce of Tomorrow

## Emma Grede's 'shark-witted' approach to inclusive leadership



**2:40 p.m. ET**

1 HRCI, 1 SHRM, 1 CPE\*

Emma Grede, serial entrepreneur, philanthropist and the first Black woman to guest shark on ABC's "Shark Tank," will discuss how she prioritizes diversity and inclusion in the workplace. Learn impactful strategies from one of the world's most influential business leaders. Emma has earned recognition as one of "America's Richest Self-Made Women" and "America's Richest Self-Made Women Under 40" by Forbes. Grede is also the CEO and cofounder of Good American, founding partner of SKIMS and chairwoman of The Fifteen Percent Pledge. She will be joined by Daina Bowler, division vice president, sales, and coleader of the market impact focus within Women in Leadership, ADP.

### Featuring:



**Emma Grede**

Businesswoman,  
Entrepreneur, Philanthropist



**Daina Bowler**

Division Vice President,  
Sales, ADP

[1. ADPRI, Look who got promoted! \(No, it's not mom or dad\), 2024](#)

\*Approved for 1 HRCI credit, 1 SHRM credit and 1 CPE credit for live attendees who meet credit criteria only



Always Designing  
for People®